

NEW LIBRARY PLANNING
LYON TOWNSHIP
PUBLIC LIBRARY

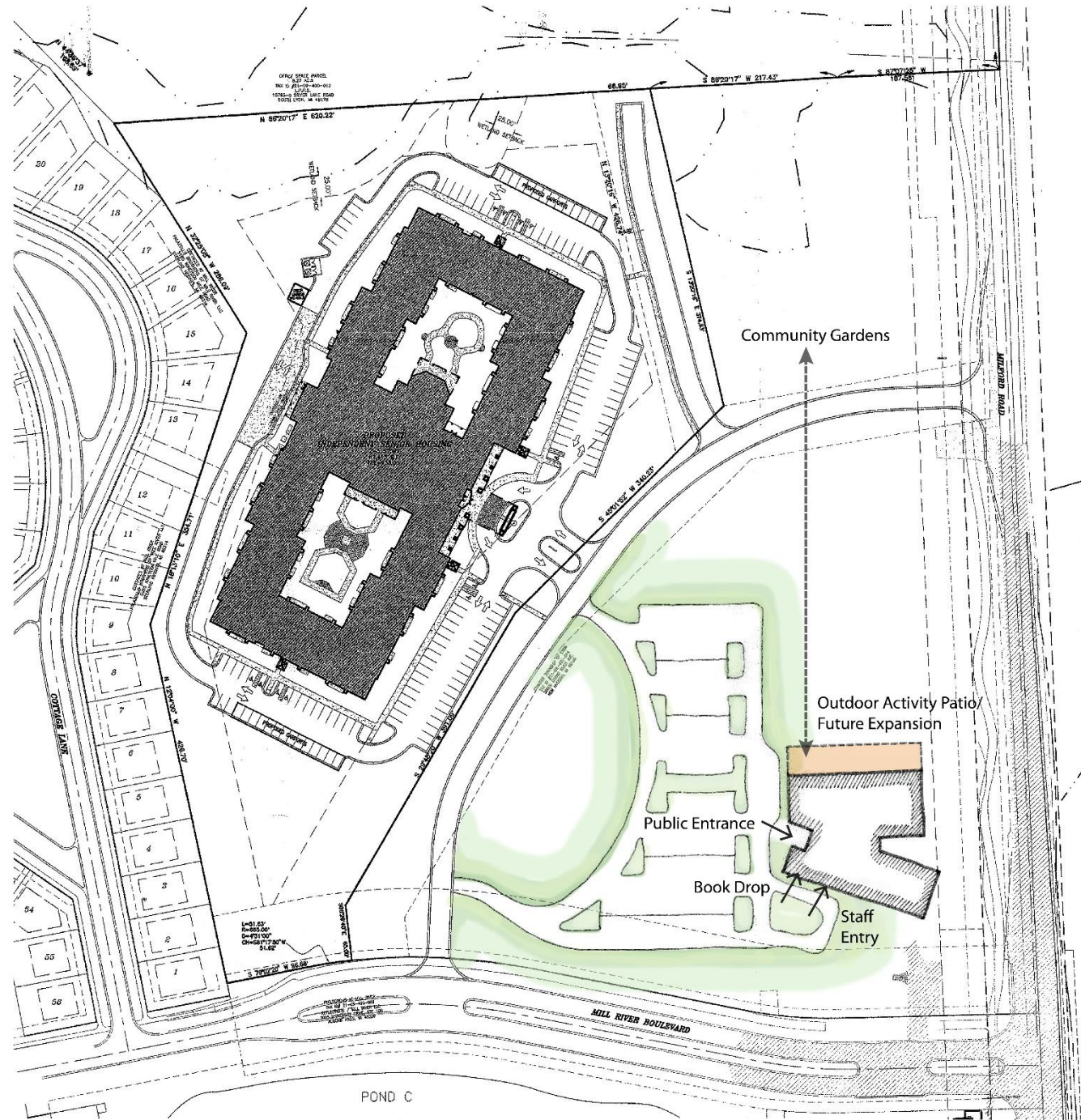
PROJECT PRIORITIES

- MESSAGING: FUTURE PLANNING
 - BUILDING PLANNING FOR FUTURE EXPANSION
 - FLEXIBLE SPACE PLANING
- COMMUNITY HUB / EXPANDED PROGRAMMING
 - DEDICATED PROGRAM ROOMS
 - DEDICATED GENEALOGY
- SUPPORT LIBRARY TEAM
 - IMPROVED STAFF AREAS
 - DEDICATED FRIENDS STORAGE + STOREFRONT
- ENHANCED TECHNOLOGY
 - TECH INTEGRATED THROUGHOUT
 - PROGRAM ROOM CAN INCORPORATE MAKER SPACE

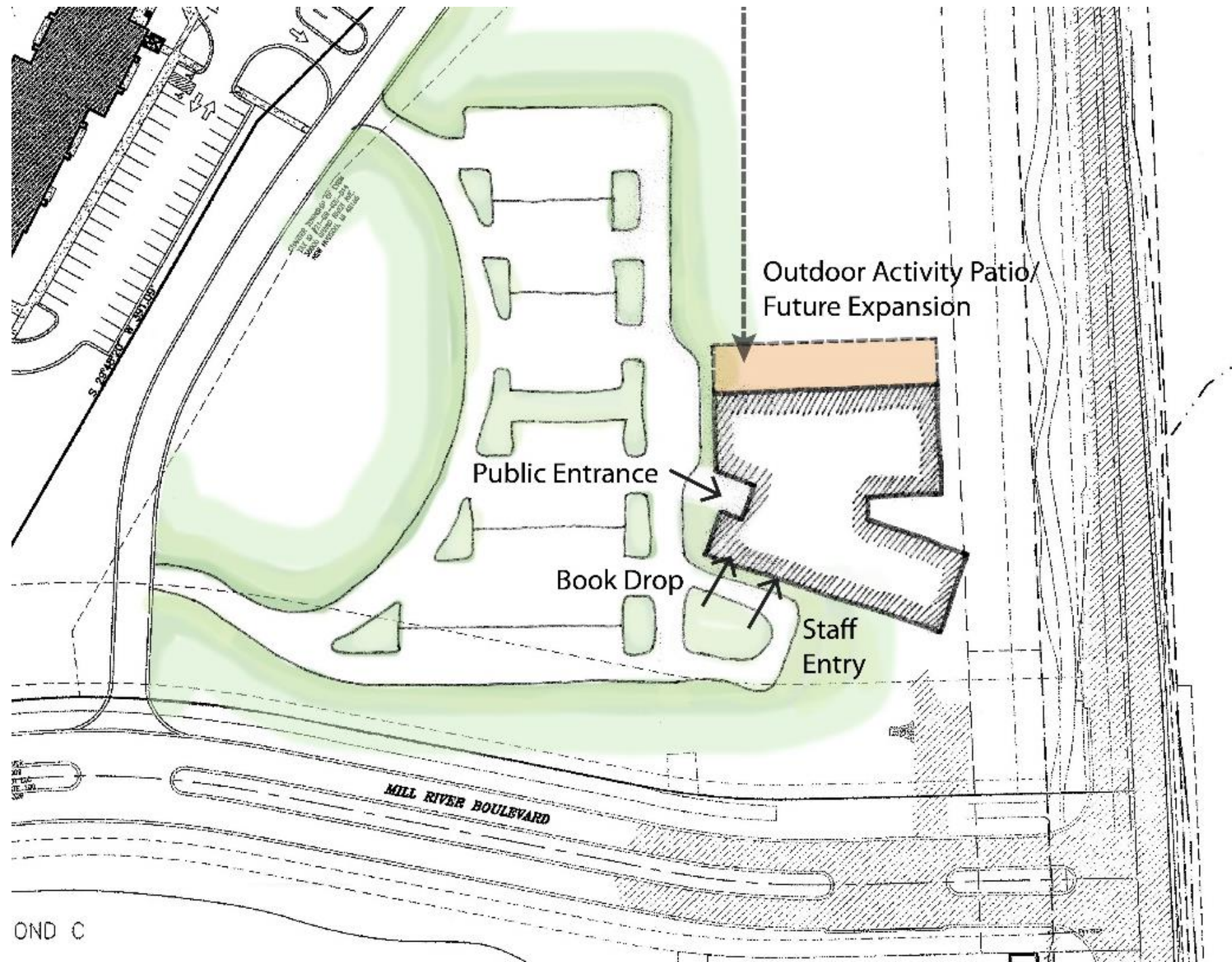
LTPL

VISION

LTPL
SITE PLAN



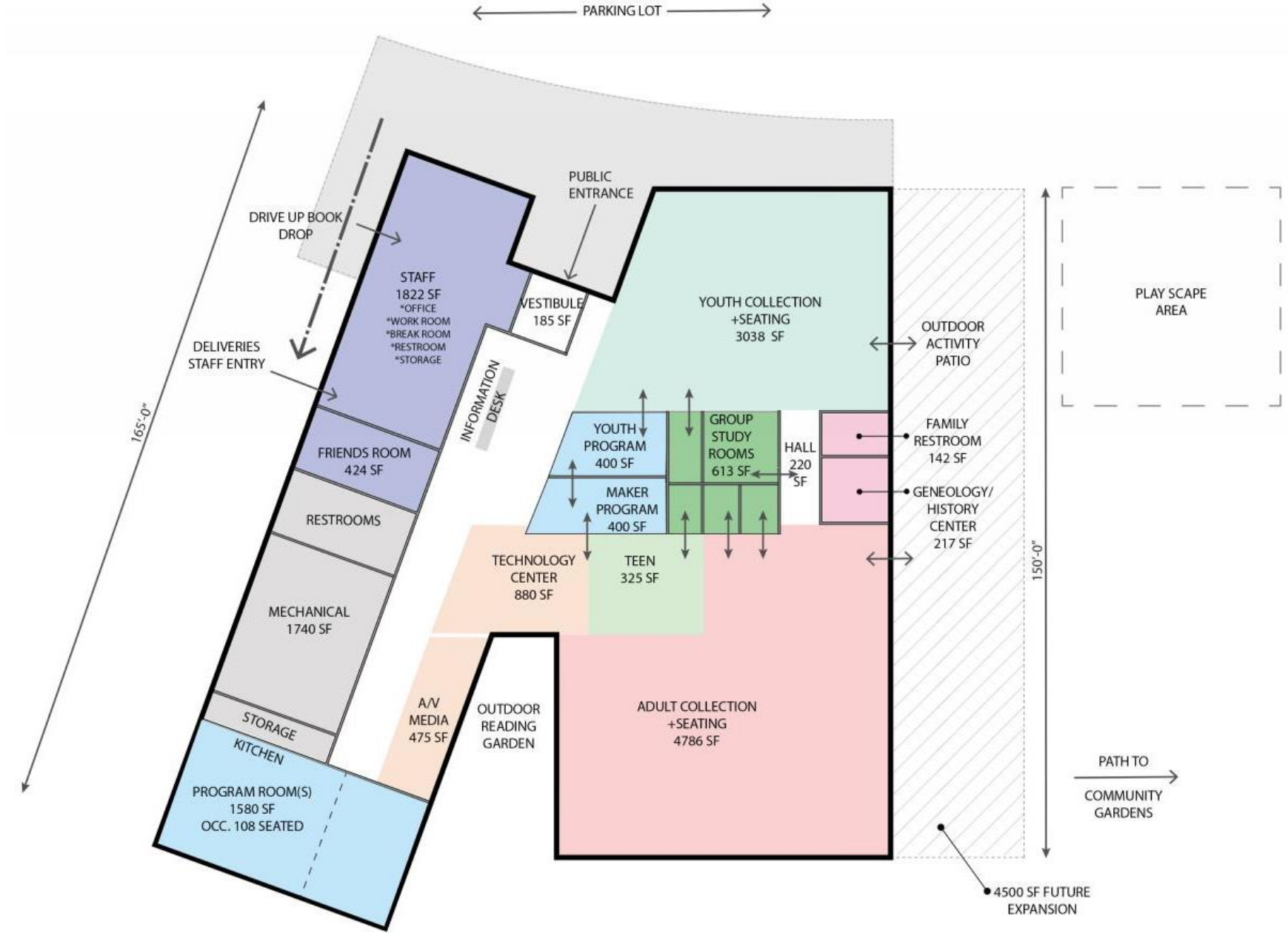
LTPL
SITE PLAN



OND C

LTPL PLAN

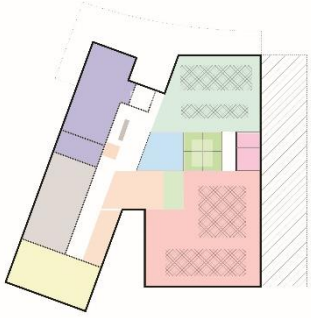
19,025 sf + room to expand



LYON TOWNSHIP PUBLIC LIBRARY
New Library Diagram 1/22/2020



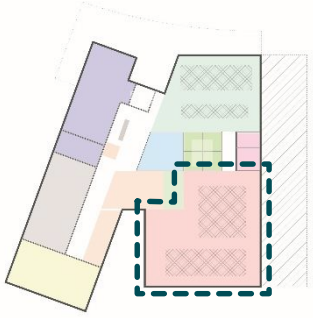
Area Plan Diagram
19,025 GSF



- DEDICATED FRIENDS AREA – SMALL STOREFRONT
- DEDICATED GENEALOGY AREA
- TECHNOLOGY INTEGRATED THROUGHOUT
- FLEXIBLE SPACE THROUGH MOVEABLE FURNITURE



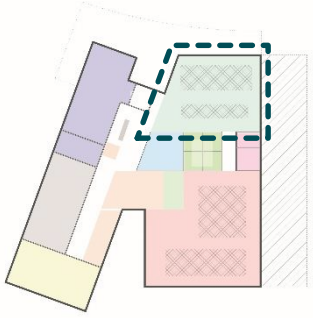
LTPL
GENERAL



- SOFT SEATING AREAS INTEGRATED
- CASUAL VENDING/ SELF-SERVE COFFEE BAR
- CONNECTIVITY TO EXTERIOR



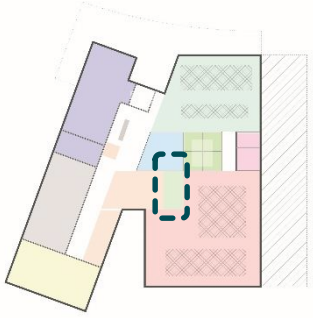
LTPL
ADULT



- MAINTAIN LINE OF SIGHT FOR STAFF
- ADJACENT FAMILY RESTROOMS

LTPL
YOUTH

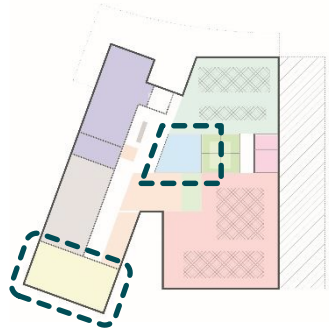




- SOFT SEATING AREAS INTEGRATED
- STUDY ROOMS BRIDGE TEEN/ ADULT



LTPL
TEEN



- LARGE MAIN PROGRAM ROOM THAT CAN BE DIVIDED INTO TWO
- DEMONSTRATION KITCHEN AREA
- YOUTH PROGRAM RM - DEDICATED STORAGE + SINK
- MAKER SPACE



LTPL
**PROGRAM
ROOMS**

LTPL

PROBABLE COST

Construction Costs	Quantity	Unit Cost	Cost
Sitework	24,000 sf	\$50	\$1,200,000
New Building Construction	19,000 sf	\$280	\$5,320,000
		subtotal	\$6,520,000
		Escalation for Fall 2021 Construction (4% yr)	\$532,032
		subtotal w/ escalation	\$7,052,032

Project Costs	Quantity	Unit Cost	Cost
Furniture and Furnishings	19,000 sf	\$25	\$475,000
Technology	19,000 sf	\$20	\$380,000
Reproduction	1	\$40,000	\$40,000
Permits	1	\$70,000	\$70,000
Survey	1	\$10,000	\$10,000
		subtotal	\$975,000

	Architecture / Engineering (8%)	\$632,563
	Owner Contingency (9%)	\$711,633
	Bond and Legal services (1.5%)	\$140,568

Total Project Cost	\$8,979,764
---------------------------	--------------------

